

View Station Software



Fully Configurable Camera Viewing Software

The View Station presents a fully featured operator interface to a network of video cameras. Operators are provided camera access and control regardless of location or size of the video network.

possibilities for integration of legacy or emerging third party software and hardware technologies. View Station provides a scalable architecture providing robust performance for systems of any size.

The View Station features and tools present an open platform with limitless

- Create any number of views
- Point & click access to video from any camera
- Event- or schedule-based system wide automation
- Simultaneous support of multiple camera models and codecs
- Alarm management
- Build locked down consoles with limited menus
- User-defined button panels

Create any view you need

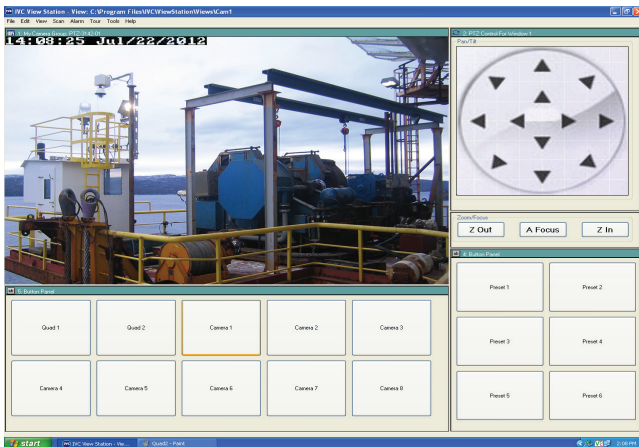
The format and content of a View Station display is fully configurable. Multiple views can be defined and subsequently displayed based on system conditions or user requirements. Since views may be directed to specific connected monitors, View Station may be used to build control room video walls. In addition to live and stored video, a view may include any mix of the available screen elements and functions.

Available Screen Elements:

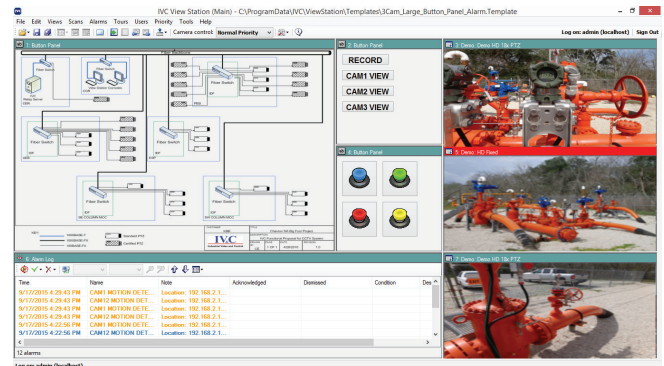
- PTZ controls
- Panoramas
- Configurable button controls
- Browser windows
- Tour controls
- Playback controls
- Camera lists
- Archived video directory
- Alarm log
- Text-messaging control



Multi-monitor views



Kiosk/Touchscreen operator consoles

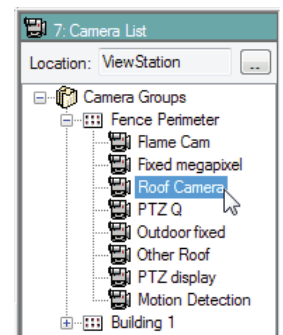
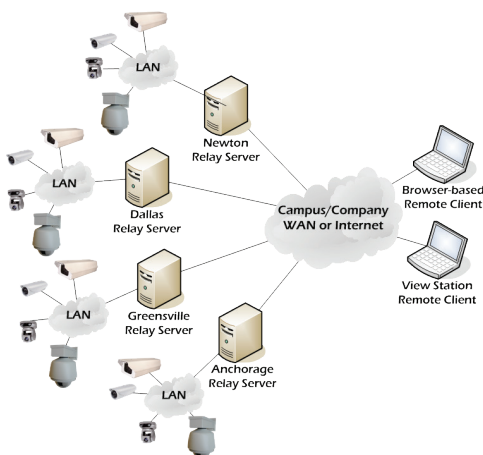


Event response views

Group cameras for viewing in any way that suits the application!

The View Station puts no limitations on how you manage your camera network. Include cameras from multiple manufacturers. Combine M-JPEG, and H.264.

Regardless of the size of your video network, you decide which cameras to manage with a given View Station. Group cameras any way appropriate - by function, by type, by location, etc.



From the View Station camera list, you may drag and drop cameras to live video windows.

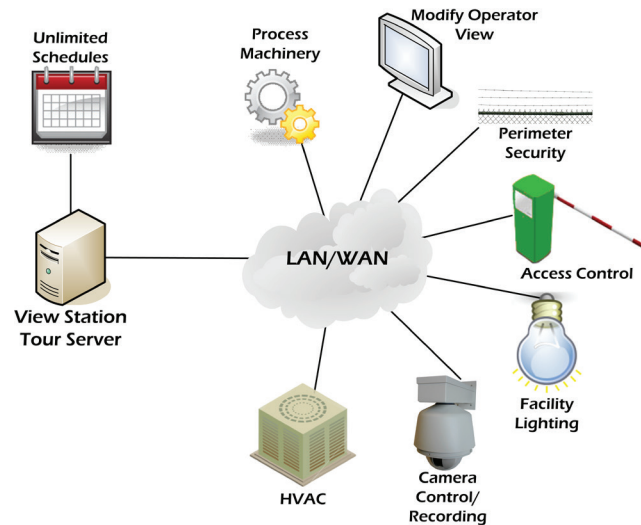
Schedule-based Automation

The View Station can be the “Swiss Army Knife” of your surveillance system. It includes several tools and mechanisms to integrate our video system with other system components. Since our system is IP-based, we can monitor or control not only cameras, but any device or software component connected to the video network. If you have a device currently installed that is not network-capable, our engineers can devise a strategy to accomplish this.

Scheduled Tours

- Schedule-based automation; no operator intervention necessary
- Create as many schedules as you need
- Control camera operations
- Activate/Deactivate other security or facility devices
- Change operator views according to time of day or shift

IVC’s View Station provides a comprehensive suite of capabilities to automate your video monitoring system.



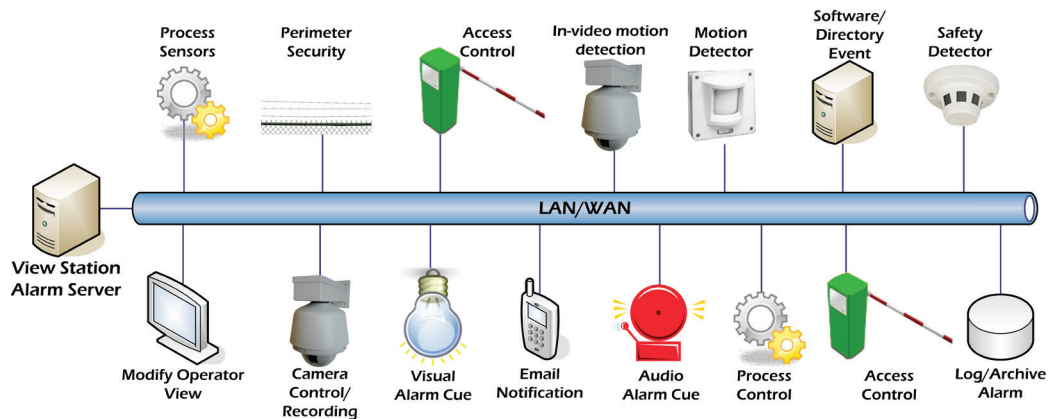
Event-based Automation

View Station’s Alarm Server is our alarm system integration tool. It can listen for multiple alarm message types from a variety of devices including cameras. As the diagram illustrates below, users have the flexibility to choose any number of standard and custom responses.

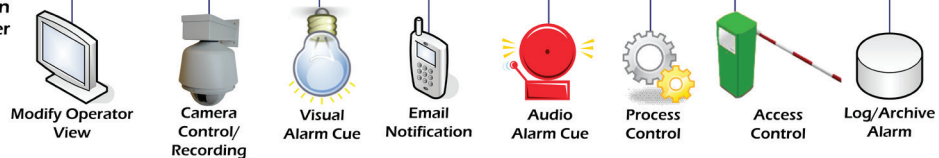
Supported Alarm Message Protocols

- TCP
- SMTP
- FTP
- Telnet
- MODBUS
- IPASCI
- OPC.NET
- HTTP
- Other

Alarm Sources



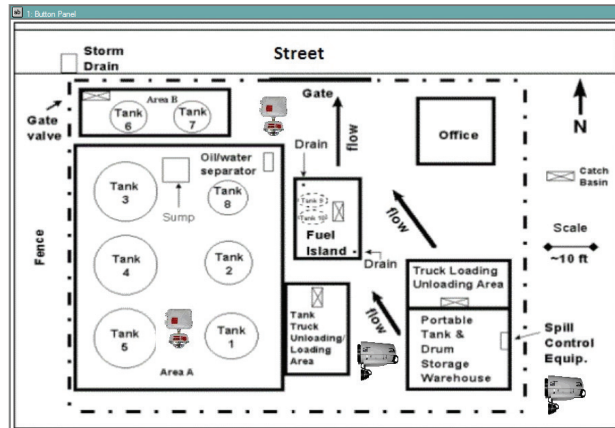
Alarm Responses



Operator-Initiated Operations

The View Station software provides the ability for the user to create one or more button panels within a view. Standard buttons or any graphic can be dynamically positioned on a background image of your choice. The panels could include buttons to:

- Issue commands to other devices or software on the network
- Move camera to a preset position
- Start or stop video recording
- Control camera scans
- Open new view
- Assign camera to live video window



A video surveillance system designer may add as many button panels and buttons as are necessary to provide the automation needed.

► system requirements

Typical requirements for a 24-camera system:

| | |
|-------------------------|---|
| CPU | Intel i7 or higher |
| RAM | 16 Gbytes DDR memory or higher |
| HDD | 2 Tbytes |
| Ethernet | 10/100/1000Base-TX |
| Video Card | GPU capable, NVidia brand or equivalent |
| Operating System | Windows 10 Professional |

► ordering information

To simplify your installation, IVC offers computers pre-configured with the appropriate View Station Software. Ask your IVC representative about this option.

| Part Number | Description |
|-----------------|---|
| VSS-4004 | Provides for simultaneous viewing and control of up to four cameras. |
| VSS-4008 | Provides for simultaneous viewing and control of up to eight cameras. |
| VSS-4016 | Provides for simultaneous viewing and control of up to sixteen cameras. |
| VSS-4024 | Provides for simultaneous viewing and control of up to twenty-four cameras. |



MADE IN THE
USA

330 Nevada St., Newton, MA 02460 www.ivcco.com 617-467-3059

© 2019, Industrial Video & Control Co. The Industrial Video & Control Co. logo is a registered trademark of Industrial Video & Control Co.. All other company names and products are trademarks or registered trademarks of their respective companies. All information provided is subject to change without notice. 2/7/2022

